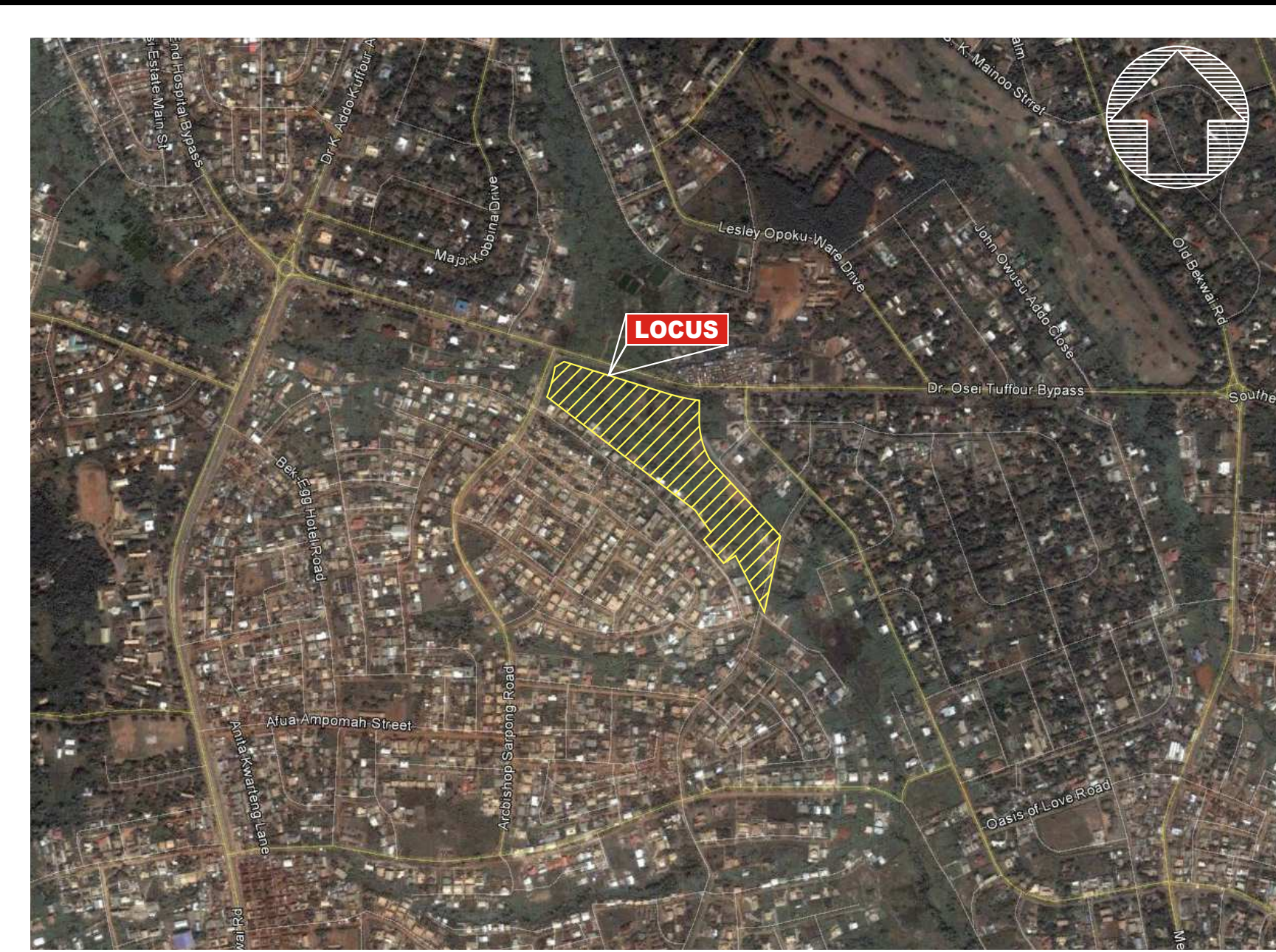




**PROJECT TABULATION**

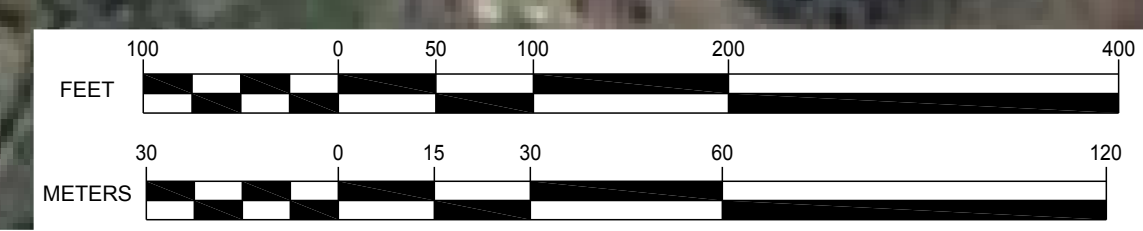
<b>A. Tenant Store Area</b>	
Tenant Store Area	13,000 S.M.
Game	5,000 S.M.
ShopRite	3,500 S.M.
<b>B. RETAIL PARKING</b>	
Tenant Store Area:	4 spaces / 100 S.M. Gross Building Area = 520 spaces
Game:	5 spaces / 100 S.M. Gross Building Area = 250 spaces
ShopRite:	5 spaces / 100 S.M. Gross Building Area = 175 spaces
Parking Required	520 + 250 + 175 = 945 spaces
Parking Provided	= 946 spaces



LOCUS MAP - NOT TO SCALE



INSET A (SEE MATCHLINE)



**HIGHPOINT**  
 HIGHPOINT ENGINEERING, INC.  
 63 MAIN STREET, SUITE 4  
 BRIDGEWATER, MA 02324  
 t (508) 659-0059 | www.highpointeng.com

CLIENT:

BGI LLC  
 244 FIFTH AVENUE  
 NEW YORK, NY 10016 | CT 8918  
 ACCRA, GHANA

SEAL

**KUMASI RETAIL CENTER**  
 PROPOSED SITE PLAN  
 DR. OSEI TUFFOUR BYPASS  
 KUMASI, GHANA

OWNER/APPLICANT: BGI LLC

REV	DATE	DESCRIPTION

ISSUE TYPE:  
SCHEMATIC DESIGN

ISSUE DATE:  
FEBRUARY 19, 2013

PROJECT NUMBER:  
13002

DRAWN BY: JJA  
 CHECKED BY: TF  
 Copyright (c) by Highpoint Engineering, Inc.  
 All Rights Reserved.

SHEET TITLE:  
**SITE PLAN EXHIBIT**

SHEET NUMBER:  
**SP006**